









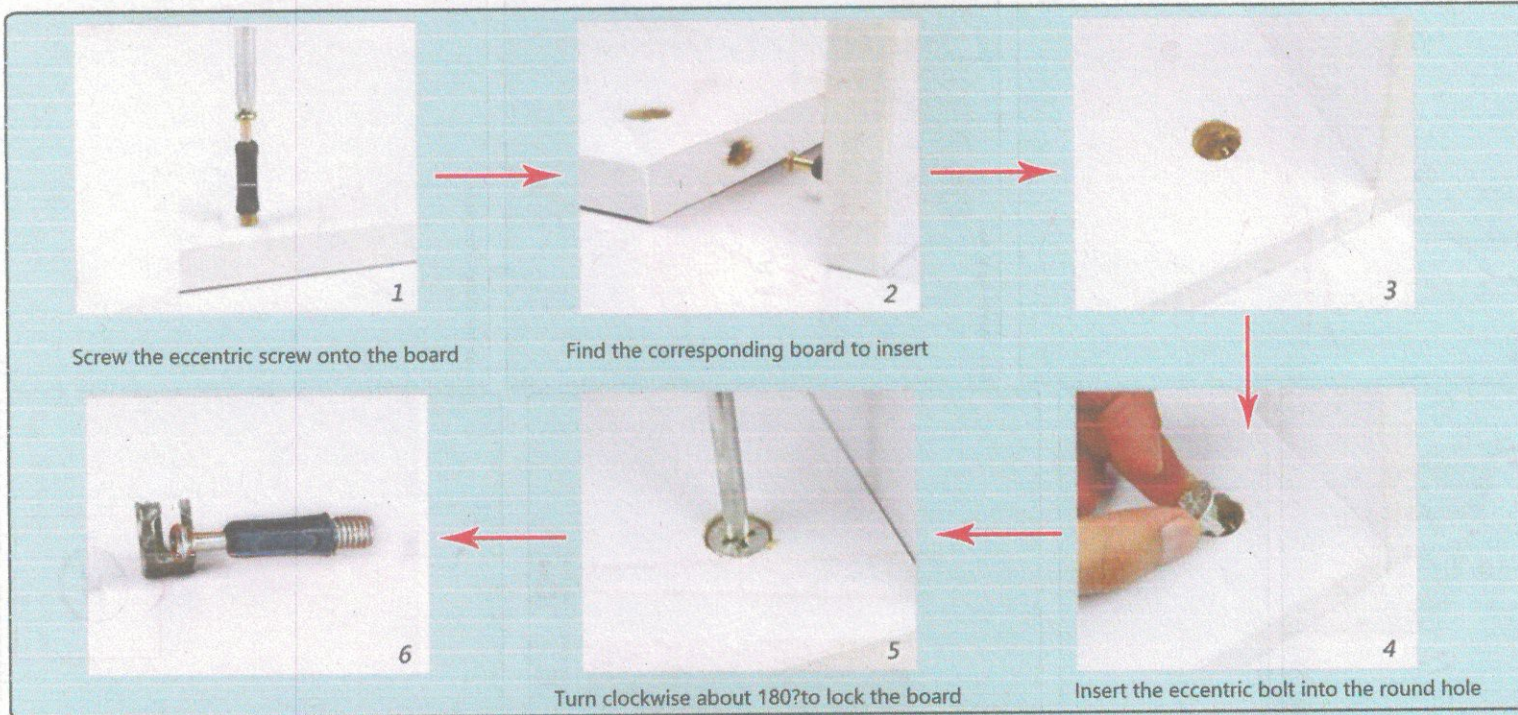
# H252 single draw

H08

							
Eccentric screw	Eccentric bolt	3.5CM self-tapping screws	Haft	Handle screw	1CM flat head screws	Metal pin	Metal pin
A*9	B*9	C*9	D*1	E*1	F*16	G*2	H*8

**Tips: Screw seven points tight during installation, and then tighten it after all is completed!**

## Eccentric installation principle:



## Installation steps:

